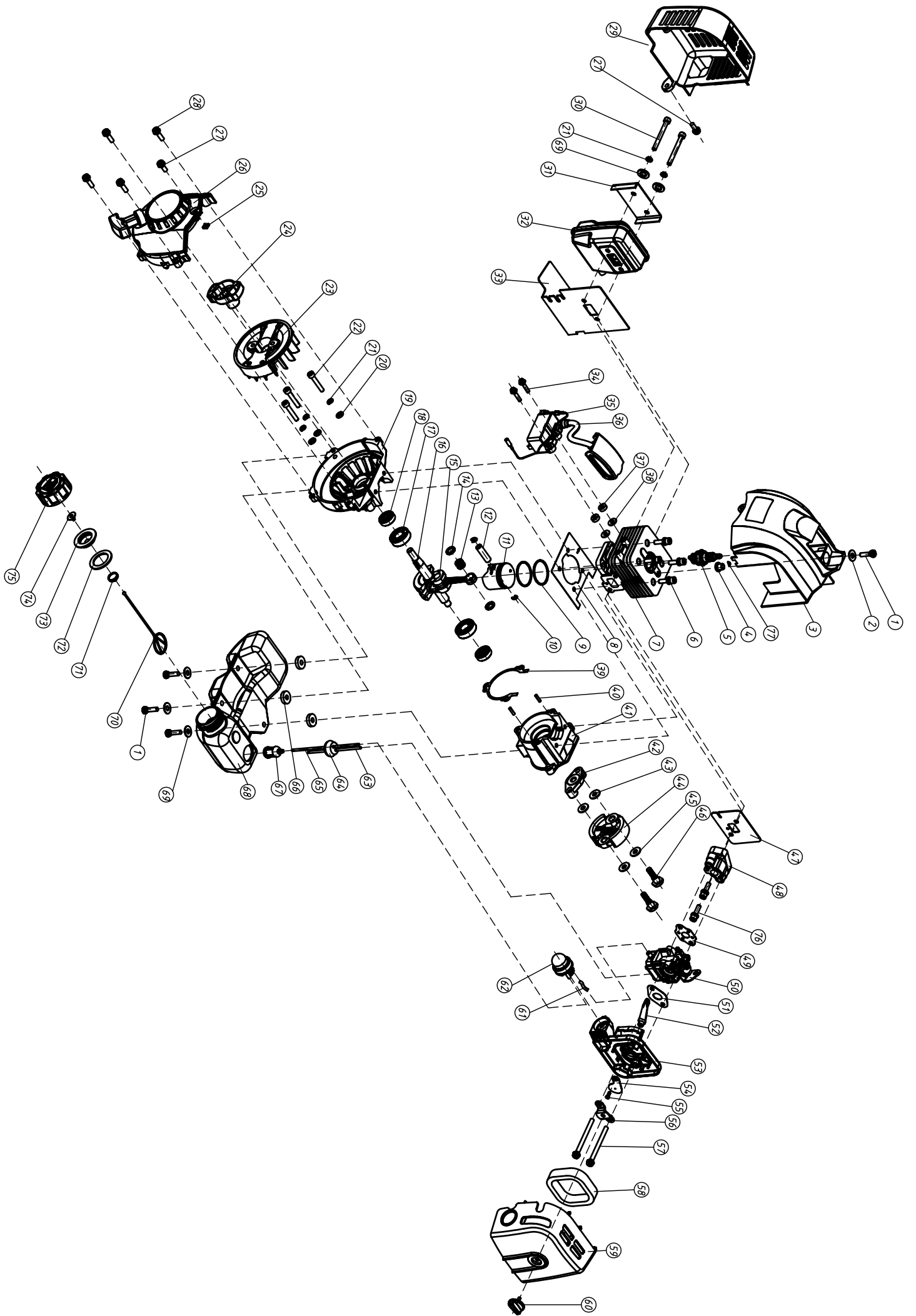


| Spare parts list for RPH2660RH Base | | | | | |
|-------------------------------------|---------|-----------------|----------------------|-----|-----------|
| Ser.NO. | Erp NO. | Part Name | Parts name | Qty | FOB price |
| 2-1 | 6961 | 护刃器 | Safeguard | 1 | |
| 2-2 | 6963 | 刀片固定板 | Settle plate | 1 | |
| 2-3 | 6960 | 刀片 | Blader | 1 | |
| 2-4 | 6722 | 调整滑块 | Spacer | 8 | |
| 2-5 | 6962 | 刀片托架 | Blader backstop | 1 | |
| 2-6 | 6977 | 螺钉M5x16(GB5789) | Screw M5x16 | 4 | |
| 2-7 | 6964 | 刀片护罩 | Soft guard | 2 | |
| 2-8 | 6755 | 螺钉组合M5x16 | Screw M5x16 | 6 | |
| 2-9 | 6745 | 齿轮箱盖 | Gear case lid | 1 | |
| 2-10 | 6731 | 长垫片 | Plate | 2 | |
| 2-11 | 6729 | 密封垫 | Gasket | 1 | |
| 2-12 | 6730 | 毛毡垫 | Felt | 1 | |
| 2-13 | 1164 | 螺钉(M5x25) | Screw(M5x25) | 2 | |
| 2-14 | 1173 | 螺钉(M5x20) | Screw(M5x20) | 1 | |
| 2-15 | 6728 | 固定块 | Retainer | 1 | |
| 2-16 | 6734 | 传动臂 | Transmission arm | 2 | |
| 2-17 | 6772 | 轴承6805-2RS | Bearing6805-2RS | 2 | |
| 2-18 | 6733 | 偏心轮 | Eccenter | 1 | |
| 2-19 | 6735 | 齿轮轴 | Geardrive | 1 | |
| 2-20 | 7803 | 螺钉(M4x10) | Screw(M4x10) | 4 | |
| 2-21 | 4538 | 挡圈28 | Ring 28 | 1 | |
| 2-22 | 2715 | 轴承6001-2RS | Ball bearing6001-2RS | 2 | |
| 2-23 | 6732 | 偏心轮轴 | Eccenter spindle | 1 | |
| 2-24 | 6723 | 增强垫板 | Plate | 1 | |
| 2-25 | 4319 | 防松螺母M5 | Nut M5 | 5 | |
| 2-26 | 6746 | 齿轮箱 | Gear case | 1 | |
| 2-27 | 3697 | 黄油嘴 | Butter nib | 1 | |
| 2-28 | 5489 | 被动盘焊合 | Drum | 1 | |
| 2-29 | 6972 | 防护手柄 | Handle | 1 | |
| 2-30 | 4335 | 螺钉(M5x25) | Screw(M5x25) | 2 | |
| 2-31 | 4314 | 自攻螺钉 (ST4.2x12) | Screw (ST4.2x12) | 5 | |
| 2-32 | 6966 | 右操纵手柄 | Control handle | 1 | |
| 2-33 | 6967 | 手把定位块 | Bracket | 1 | |
| 2-34 | 6957 | 复位弹簧 | Spring | | |
| 2-35 | 6324 | 自攻螺钉(ST3x10) | Screw(ST2.9x10) | 1 | |

| | | | | | |
|-------|------|-------------|------------------|---|--|
| 2-36 | 4256 | φ3大平垫 | Washer φ3 | 1 | |
| 2-37 | 6954 | 停车开关组合 | Stop button comp | 1 | |
| 2-38 | 6955 | 油门绳 | Cable comp | 1 | |
| 2-39 | 6969 | 锁油门手柄 | Hand grip | 1 | |
| 2-40 | 6965 | 左操纵手柄 | Handle | 1 | |
| 2-41 | 6968 | 油门操纵手柄 | Throttle | 1 | |
| 2-42 | 6958 | 长扭簧 | Spring throttle | 1 | |
| 2-43 | 6973 | 弹簧座 | Spring seat | 2 | |
| 2-44 | 6956 | 小减振弹簧 | Spring | 2 | |
| 2-45 | 1848 | 螺钉组合(M5×20) | Screw(M5×20) | 2 | |
| 2-46 | 6971 | 底支架 | Frame | 1 | |
| 2-47 | 6959 | 大减振弹簧 | Spring | 2 | |
| 2-48 | 3004 | 螺钉组合(M5×16) | Screw(M5×16) | 2 | |
| 2-49 | 6970 | 手柄卡簧 | Spring | 1 | |
| 2-50 | 3884 | 消音器尾管 | Muffler pump | 1 | |
| 2-51 | 6536 | 螺钉M5*10 | ScrewM5*10 | 1 | |
| 20-52 | 9998 | 停车线 | flameout line | 1 | |



Spare parts list for RPH2660RH Engine

| Ser.NO. | Erp NO. | Part Name | Parts name | Qty | |
|---------|---------|-----------------|--------------------------|-----|--|
| 1-1 | 5614 | 螺钉组合 M5*20 | Screw Assy | 4 | |
| 1-2 | 4109 | 平垫 φ5*1 | Plain Washer φ5*15*1 | 1 | |
| 1-3 | 7535 | 缸体护罩 | Housing,Cylinder | 1 | |
| 1-4 | 7436 | 隔热套 | Spacer | 1 | |
| 1-5 | 3480 | 火花塞RCJ6Y | Spark Plug | 1 | |
| 1-6 | 5711 | 内六角组合M5*20 | Socket Head Screw | 4 | |
| 1-7 | 6574 | 缸体 | Cylinder | 1 | |
| 1-8 | 4983 | 缸体垫 | Gasket,Cylinder | 1 | |
| 1-9 | 0508 | 活塞环 | Ring,Piston | 2 | |
| 1-10 | 4555 | 活塞销挡环 | Snap Ring | 2 | |
| 1-11 | 6457 | 活塞 | Piston | 1 | |
| 1-12 | 0513 | 活塞销 | Pin,Piston | 1 | |
| 1-13 | 0498 | 小头滚针轴承 | Needle Bearing | 1 | |
| 1-14 | 3355 | 止退垫圈E1001 4151A | Thrust Washer | 2 | |
| 1-15 | 4982 | 曲柄连杆组合（左旋） | Crank Shaft | 1 | |
| 1-16 | 4562 | 半圆键 | Key | 1 | |
| 1-17 | 0473 | 轴承6001/P5 | Bearing | 2 | |
| 1-18 | 0047 | 油封12*22*7 | Oil Seal | 2 | |
| 1-19 | 5049 | 后半曲轴箱 | Rear Crankcase | 1 | |
| 1-20 | 6536 | 平垫 G97(φ5) | Plain Washer | 3 | |
| 1-21 | 7813 | 弹垫 G93(φ5) | Spring Washer | 5 | |
| 1-22 | 4373 | 内六角螺钉 M5*30 | Socket Head Screw | 3 | |
| 1-23 | 5399 | 磁电机转子 | Flywheel | 1 | |
| 1-24 | 8559 | 起动拨盘组合 | Starter Pulley Assy | 1 | |
| 1-25 | 1151 | 方螺母 GB39(M5) | Square nut | 1 | |
| 1-26 | 7541 | 启动器组合 | Starter Assy | 1 | |
| 1-27 | 0556 | 螺钉组合M5*14 | Screw Assy | 2 | |
| 1-28 | 1556 | 螺钉组合M5*18 | Screw Assy | 4 | |
| 1-29 | 7536 | 消音器护罩 | Housing,Muffler | 1 | |
| 1-30 | 4459 | 内六角螺钉M5*50 | Socket Head Screw | 2 | |
| 1-31 | 5053 | 消音器隔热板 | Insulating Plate,Muffler | 1 | |
| 1-32 | 5046 | 消音器组合 | Muffler Assy | 1 | |
| 1-33 | 7833 | 消音器垫 | Gasket,Muffler | 1 | |
| 1-34 | 4242 | 螺钉组合M4*20 | Screw Assy | 2 | |
| 1-35 | 6953 | 停车线 | Lead Wire | 1 | |
| 1-36 | 3772 | 磁电机定子 | Ignition Coil Assy | 1 | |
| 1-37 | 3477 | 隔热垫 E1001 7211A | Insulating Gasket | 2 | |
| 1-38 | 4451 | 加大平垫 | Plain Washer | 2 | |
| 1-39 | 7433 | 曲轴箱垫 | Gasket,Crankcase | 1 | |

| | | | | | |
|------|-----------|------------------|---------------------|---|--|
| 1-40 | 4567 | 定位销GB119 | Locating Pin | 2 | |
| 1-41 | 4979 | 前半曲轴箱 | Front Crankcase | 1 | |
| 1-42 | 6667 | 涨紧块座 | Base,Clutch Assy | 1 | |
| 1-43 | 4500 | 钢平垫 | Washer | 2 | |
| 1-44 | 2492 | 涨紧块组合 | Clutch Assy | 1 | |
| 1-45 | 4548 | 波形垫圈 | Wave Washer | 2 | |
| 1-46 | 0510 | 螺钉轴 | Clutch Bolt | 2 | |
| 1-47 | 7389 | 进气管垫 | Insulator Gasket | 1 | |
| 1-48 | 0377 | 进气管E1001 1311A | Insulator | 1 | |
| 1-49 | 1154 | 化油器垫 E1001 8412A | Carburetor Gasket | 1 | |
| 1-50 | 5034 | 化油器 | Carburetor | 1 | |
| 1-51 | 1153 | 空滤器底壳垫 | Gasket,Cleaner Base | 1 | |
| 1-52 | 7540 | 阻风门手柄 | Choke Lever | 1 | |
| 1-53 | 7538 | 空滤器内罩 | Base,Cleaner | 1 | |
| 1-54 | 5076 | 阻风门 | Choke | 1 | |
| 1-55 | 7349 | 自攻螺钉3*8 | Tapping Screw | 1 | |
| 1-56 | 5039 | 挡油板 | Baffle Plate | 1 | |
| 1-57 | 4435 | 螺钉组合 M5x65 | Screw Assy | 2 | |
| 1-58 | 0745 | 空滤器滤芯 | Element | 1 | |
| 1-59 | 7537 | 空滤器外罩 | Cover,Cleaner | 1 | |
| 1-60 | 7542 | 旋钮 | Knob | 1 | |
| 1-61 | SLP600D61 | 油管 | Fuel Line | 1 | |
| 1-62 | 4926 | 注油器 | Primer Pump | 1 | |
| 1-63 | SLP600D63 | 回油管 | Return Tube | 1 | |
| 1-64 | 0709 | 油管胶塞 | Rubber Plug | 1 | |
| 1-65 | SLP600D65 | 进油管 | Inlet Tube | 1 | |
| 1-66 | 0733 | 塑料垫 | Plastic Washer | 3 | |
| 1-67 | 0554 | 燃油过滤器 | Fuel Filter | 1 | |
| 1-68 | 7539 | 油箱 | Fuel Tank | 1 | |
| 1-69 | 5582 | 加 $\phi 5$ 平垫 | Plain Washer | 5 | |
| 1-70 | 1273 | 防脱链 | Stopper | 1 | |
| 1-71 | 8579 | 防脱链座 | Holder,Stopper | 1 | |
| 1-72 | 8966 | 油箱盖密封圈 | Gasket,Fuel Cap | 1 | |
| 1-73 | 8574 | 进气嘴支架 | Holder,Valve | 1 | |
| 1-74 | 8817 | 进气嘴 | Valve,Fuel Cap | 1 | |
| 1-75 | 6268 | 油箱盖 | Cap,Fuel Tank | 1 | |
| 1-76 | 3013 | 进气管螺钉 | Screw, Insulator | 2 | |
| 1-77 | 0103 | 高压线胶塞 | Grommet | 1 | |